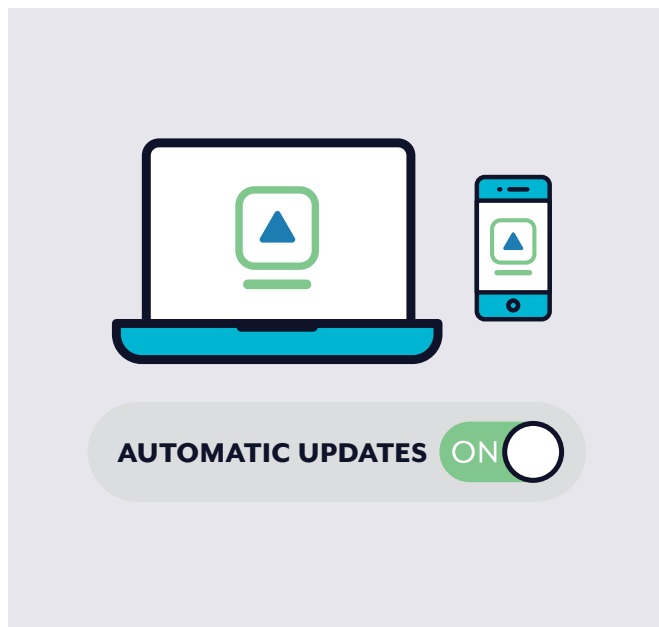


SAMPELA GUTPELA TINGTING LONG CYBER SECURITY

WEI BILONG LUKAUTIM YU YET GUT TAIM YU GO ONLINE

cyber.gov.au/learn



Mekim update long apps na devices

Mekim update long apps na devices bilong yu bai stretim samting ino stap gut na strongim security bilong yu.



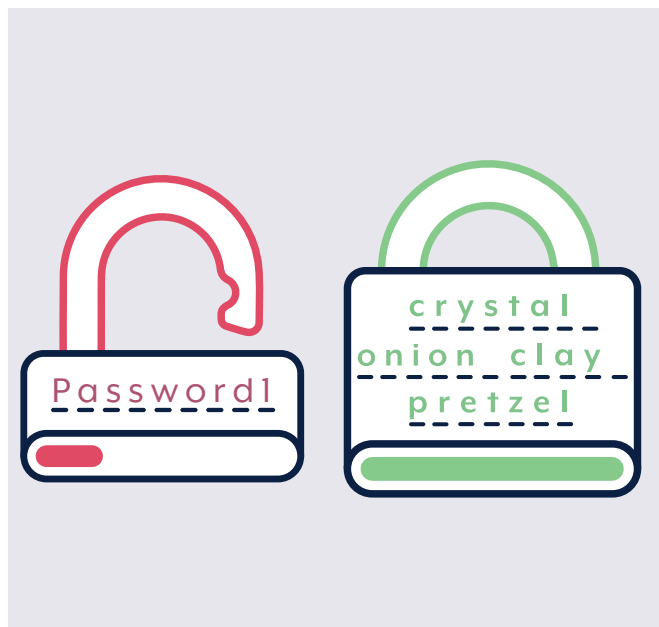
Tanim on multi-factor authentication (MFA)

MFA em min olsem yu bai gat tupela o moa wei long soim yu husait taim yu laik go insait long account bilong yu.



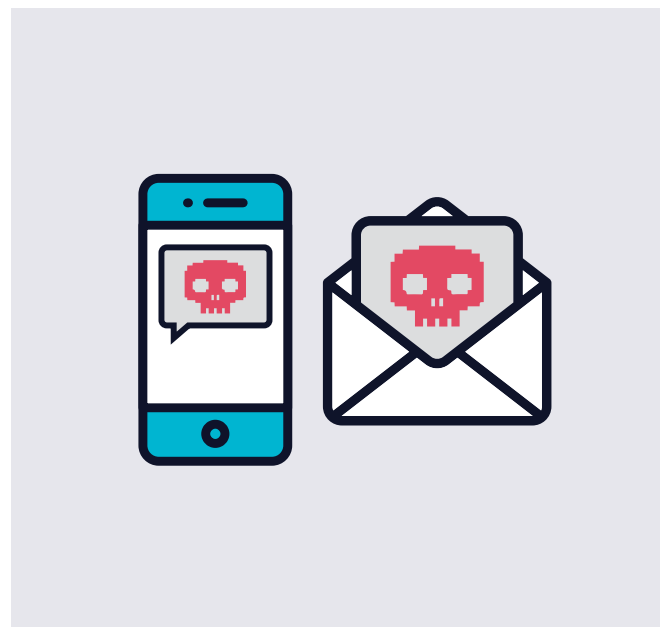
Makim taim bilong wokim backups

Backup em wei bilong mekim wanpela kopi bilong ol infomesin o toksave na putim long external storage device o long server olsem cloud.



Yusim ol strongpela passphrases

Sapos nogat MFA, yu mas yusim strongpela passphrase long lukautim account bilong yu. Passphrase em strongpela password we yu yusim fopela (4) o moa wod long mekim.



Luksave na ripotim ol scams

Noken tingting olsem olgeta samting yu ridim em tru. Yu mas lukluk na tingting gut bipo yu opim link o attachment insait long email o message.



Strongim cyber security bilong yu taim yu go long cyber.gov.au

Painim sampela moa infomesin o toksave long cyber.gov.au/learn

Ripotim cyber security birua o taim samting olsem kamap:

cyber.gov.au | 1300 CYBER1 (1300 292 371)

Dispela namba em yu ken yusim insait long Australia tasol.


Australian Government
Australian Signals Directorate

 ASD
AUSTRALIAN SIGNALS DIRECTORATE
ACSC
Australian Cyber Security Centre

Yu laik tokim mipela sampela kain tingting long dispela product? Go long cyber.gov.au na givim tingting bilong yu long mipela.